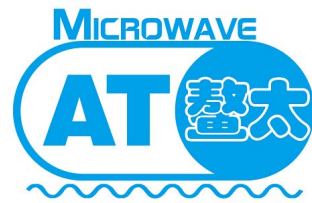


上海鳌太电子科技有限公司

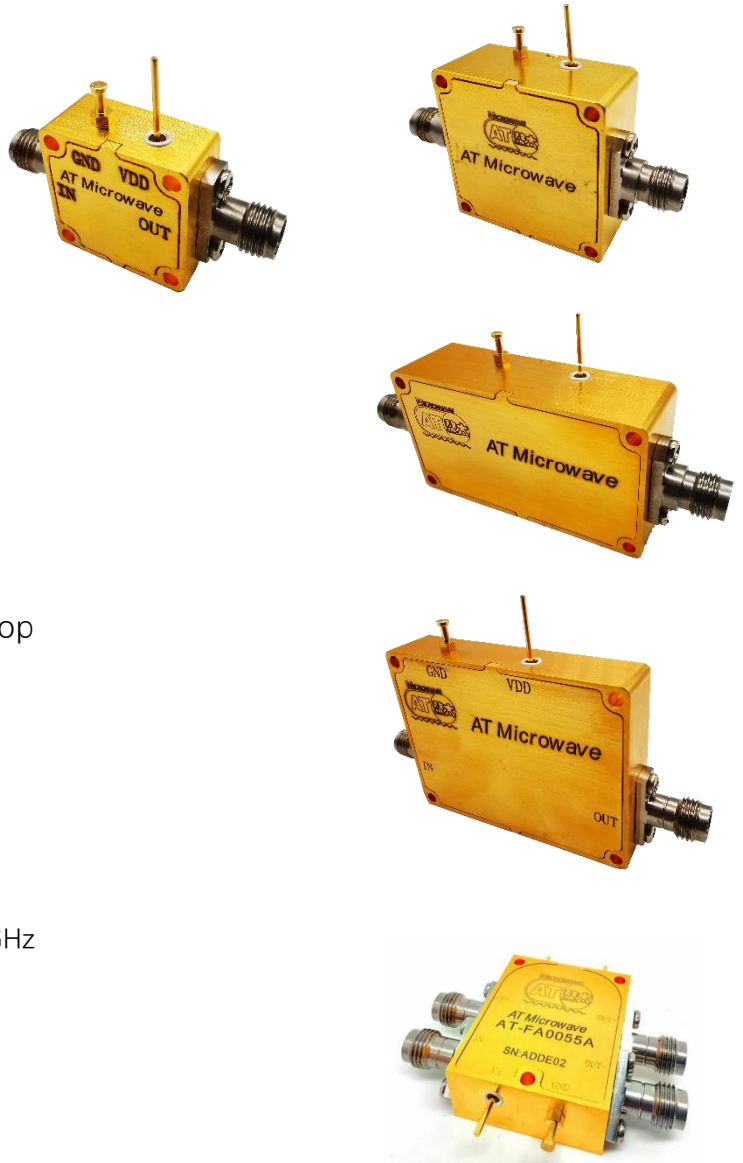
Shanghai AT Microwave Limited



*AT Microwave
Highlight Products
DC-325GHz*

1. Amplifier-Coaxial 同轴放大器

- LNA: Low Noise Amplifier
- LNA-HP: High Power LNA
- PA: Power Amplifier
- HPA: High Power Amplifier
- BB: Broadband Series
- BBLF: Optical Driver Amplifier
- LIA: Limiting Amplifier
- LCBT: Low Cost, Compact, Bench-Top
- Bench-Top LNA-PA-HPA Amplifier



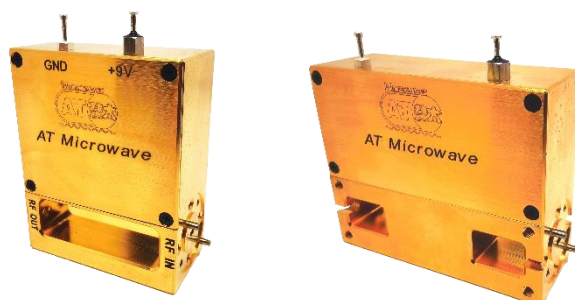
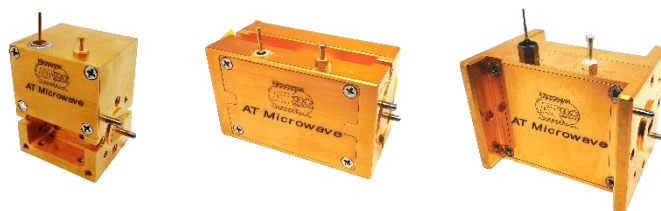
Feature:

- ✓ Frequency Range: 50kHz-26/43/50/70/110GHz
- ✓ Gain: 10-60dB
- ✓ NF: 0.8-6dB
- ✓ Power: +10dBm to +40dBm
- ✓ Connector: SMA, 2.92mm, 2.4mm, 1.85mm
- ✓ **1.0mm available**



2. Amplifier-Waveguide 波导放大器

- Full Band Low Noise Amplifier
- Narrow Band Low Noise Amplifier
- Full Band Power Amplifier
- Medium Power PA, <+25dBm
- High Power PA, >+25dBm
- CPA Series: Super High Linear Amplifier



Feature:

- ✓ Frequency Range: 33-260GHz
- ✓ Full Band and Narrow band
- ✓ Gain: Low gain and High option
- ✓ Power: +10dBm to +35dBm
- ✓ Waveguide: WR-22 to WR-04



Waveguide Band and Frequency

| Band | Q Band | U Band | V Band | E Band | W Band | F Band | D Band | G Band | H Band | J Band |
|----------------|--------|--------|--------|--------|--------|--------|---------|---------|---------|---------|
| Waveguide | WR-22 | WR-19 | WR-15 | WR-12 | WR-10 | WR-08 | WR-06 | WR-05 | WR-04 | WR-3.4 |
| Frequency /GHz | 33-50 | 40-60 | 50-75 | 60-90 | 75-110 | 90-140 | 110-170 | 140-220 | 170-260 | 220-325 |

3. Frequency Multiplier-Coaxial 同轴倍频器

- X2/X3 Active Multiplier
- X4/X6/X8 Active Multiplier
- Passive Multiplier

Feature:

- ✓ Frequency Range: 8-110GHz
- ✓ Broadband Band and Narrow band
- ✓ Multiplier Factor: X2, X3, X4, X6 and customized
- ✓ Power: +10dBm to +30dBm, higher power is available
- ✓ Connector: SMA to 1.85mm
- ✓ 1.0mm Available

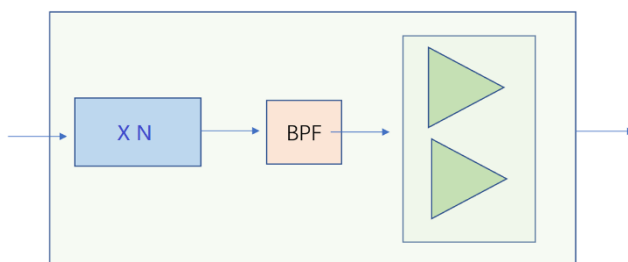
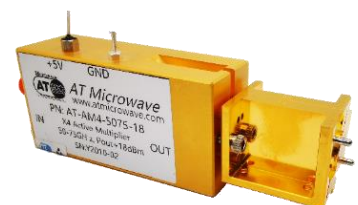


4. Frequency Multiplier-Waveguide 波导倍频器

- Full Band Multiplier
- Narrow Band Multiplier
- High Power Multiplier, up to +30dBm
- Passive Multiplier

Feature:

- ✓ Frequency Range: 33-230GHz
- ✓ Full Band and Narrow band
- ✓ Multiplier Factor: X2, X3, X4, X6, X8, X12
- ✓ Power: +10dBm to +20dBm, higher power is available
- ✓ Waveguide: WR-19 to WR-04



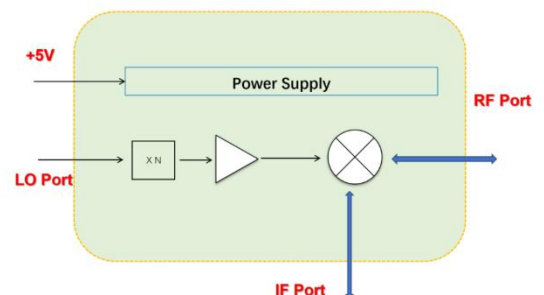
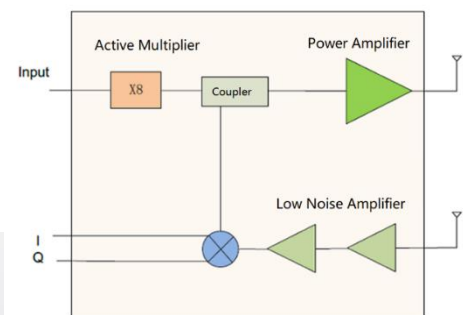
5. Mixer and IQ Mixer 混频器/IQ 混频器

- Coaxial Mixer
- Coaxial Mixer integrated with X2/X4 AMC
- Coaxial IQ Mixer
- Coaxial IQ Mixer integrated with X2/X4 AMC
- Waveguide Mixer to WR-08
- Waveguide IQ Mixer to WR-06
- Waveguide Sub-harmonics Mixer, WR-04



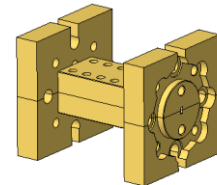
6. Tx and Rx Module 发射/接收模块

- Integrated with X2/X4 AMC
- V/E/W/D Band Tx
- V/E/W/D Band Rx
- W Band FMCW



7. Passive Module 无源模块

- Adapter, In and Between series
- DC Block: 30kHz to 110GHz
- Bias Tee: 30kHz to 70GHz
- Coaxial Band Pass Filter
- Waveguide, BPF, HPF, LPF
- Diplexer
- Power divider, Coupler
- 90/180 Degree Hybrid
- Waveguide Section
- Waveguide Taper Transition
- RSW: Rugged Straight Waveguide
- Waveguide Bends



5G mmWave Frequency Bands

| Bands | Frequency |
|--------|---|
| n257 | 26.5-29.5GHz |
| n258 | 24.25-27.5GHz |
| n259 | 39.5-43.5GHz |
| n260 | 37-40GHz |
| n261 | 27.5-28.35GHz |
| E Band | 71-76, 81-86GHz |
| W Band | 92-100, 104-114GHz |
| D Band | 130-134, 141-148.5 151.5-164, 167-174.8GHz |

| Country | Frequency |
|---------|---------------------------------|
| China | 24.25-27.5, 37.25-43.5GHz |
| Europe | 24.25-27.5GHz |
| USA | 24.25-28.35, 37-40, 64-71GHz |
| Japan | 27.5-28.28GHz |
| Korea | 26.5-29.5GHz |
| India | 24.5-29.5GHz |

8. Control Product Line 控制模块产品

- Attenuator, Analog and Digital
- Phase shifter
- Switch, SPST to SP32T: Pin Switch and MMIC Based Switch
- Power Detector



9. Frequency Source 频率源

- VCO Module
- PDRO Module
- SPF: Single Point Frequency
- Frequency Divider

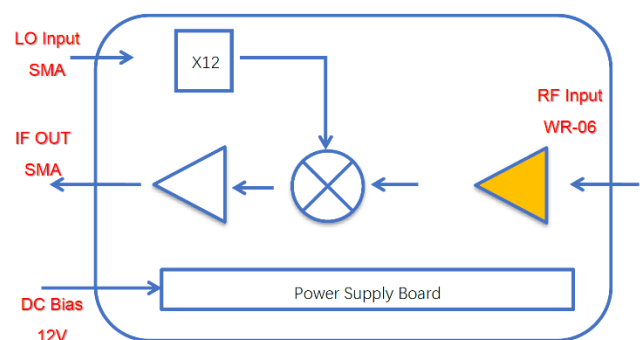


10. Bench-top Test Equipment 测试测量仪器

- Bench-Top Low Noise Amplifier and Power Amplifier
- Frequency Extender
- Up Converter
- Down Converter



Diagram Block:



*For More information:
Please visit:
www.atmicrowave.com*

