

8 Ways Wilkinson Power Divider/Combiner

AT-PD8-0240

Feature

- 2-40GHz Broadband
- Low Insertion Loss
- Outstanding Phase and Amplitude Balance

Electrical Specifications -

Specifications guaranteed from -45 to +85°C, measured in a 50Ω system

Parameter	Frequency Range(GHz)	Min	Typ	Max	Unit	
Normal Power Splitting	2-40GHz		9.2		dB	
Normal Phase Shift			0		Degree	
Amplitude Balance			+/- 0.6		dB	
Phase Balance			+/- 7		Degree	
Insertion Loss			5.5		dB	
VSWR			1.6			
Isolation			15		dB	
CW Peak			20		W	
Peak Power			3000		W	
Weight			450		g	
Dimension(LxWxH)			88.9x132x12.7			mm

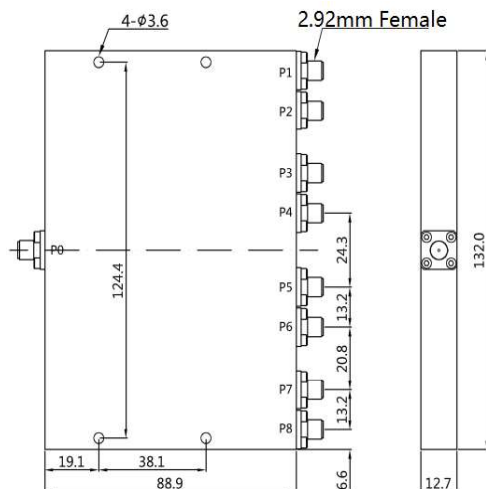
Order Information

Part Number	Description
AT-PD8-0240	2-40GHz 8ways Power Divider With 2.92mmFemale Connectors

Consult factory for other connectors option

Dimension

Unit: mm/Degree



AT Microwave

RM1204,NO.2911,North Zhongshan RD, Putuo District , Shanghai ,China, 200063

Tel:+8621-5291 8556 Email:sales@atmicrowave.com www.atmicrowave.com

Typical Performance

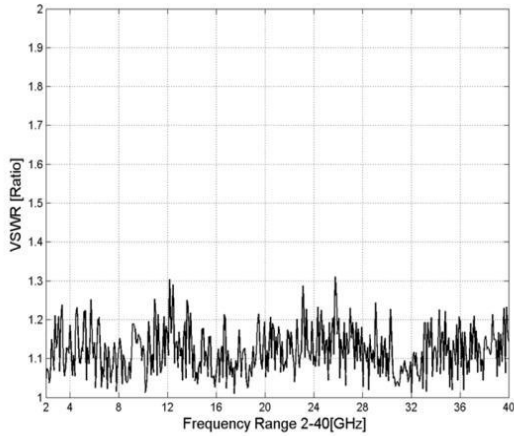


Figure 1: Input Port VSWR

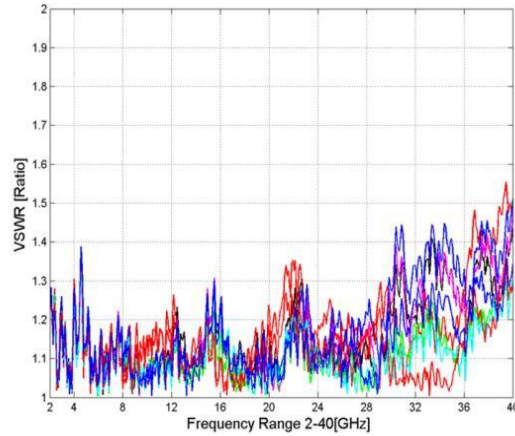


Figure 2: Output Port VSWR

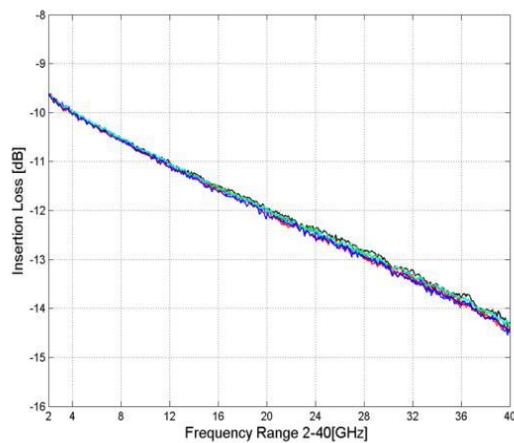


Figure 3: Insertion Loss

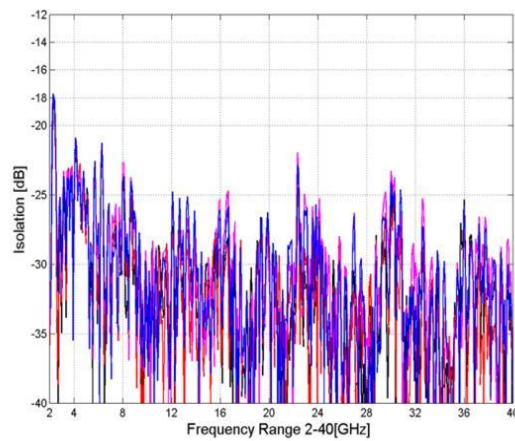


Figure 4: Output Port Isolation

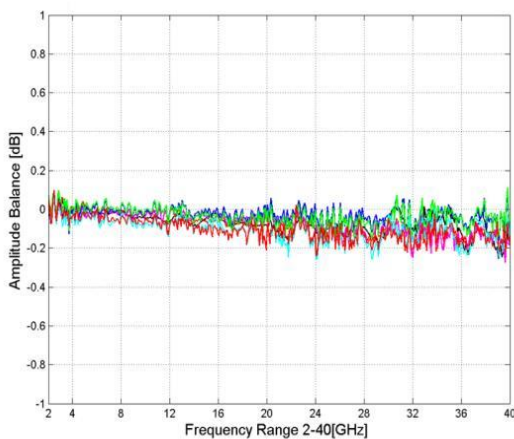


Figure 5: Output Port Amplitude Balance

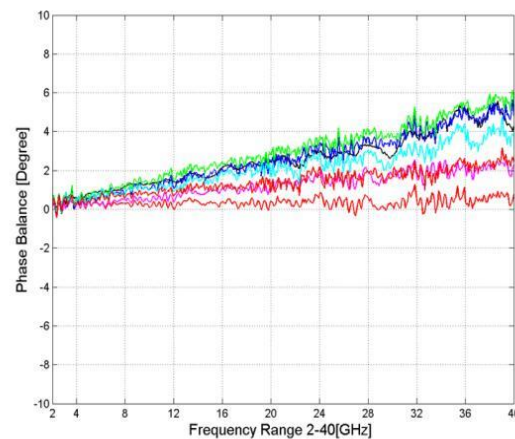


Figure 6: Output Phase Balance

AT Microwave reserves the right to make changes to the information contained herein without notice.