

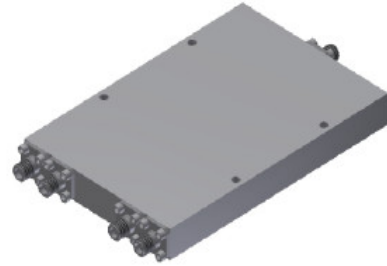
4Ways Wilkinson Power Divider/Combiner

AT-PD4-0140

REV A

Feature

- 1-40 GHz Broadband
- Low Insertion Loss
- Outstanding Phase and Amplitude Balance



Electrical Specifications -

Specifications guaranteed from -45 to +85°C, measured in a 50Ω system

Parameter	Frequency Range(GHz)	Min	Typ	Max	Unit	
Normal Power Splitting	1-40GHz		6		dB	
Normal Phase Shift			0		Degree	
Amplitude Balance			+/-0.8		dB	
Phase Balance			+/- 12		Degree	
Insertion Loss				5.2		dB
VSWR				1.7	2.2	
Isolation				14		dB
CW Peak				10		W
Peak Power				200		W
Weight				260		g
Dimension(L/W/H)			110x74x10			mm

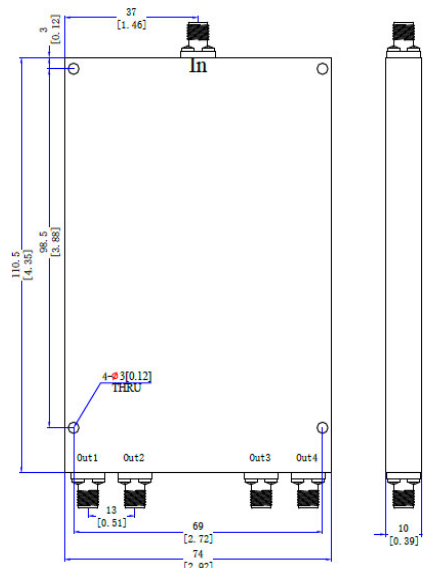
Order Information

Part Number	Description
AT-PD4-0140	4Ways 1-40GHz Power Divider With 2.92mm Female Connectors

Consult factory for other connectors option

Dimension

Unit: mm/Degree



AT Microwave

RM1204,NO.2911,North Zhongshan RD, Putuo District , Shanghai ,China, 200063

Tel:+8621-5291 8556 Email:sales@atmicrowave.com www.atmicrowave.com