

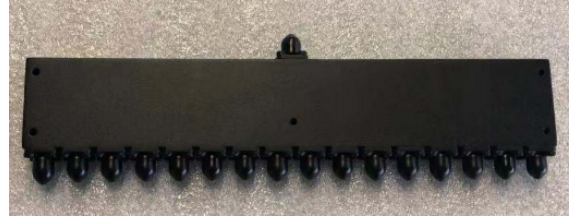
16 Ways Wilkinson Power Divider/Combiner

AT-PD16-1840

REV A

Feature

- 18-40 GHz Broadband
- Low Insertion Loss
- Outstanding Phase and Amplitude Balance



Electrical Specifications -

Specifications guaranteed from -45 to +85°C, measured in a 50Ω system

Parameter	Frequency Range(GHz)	Min	Typ	Max	Unit	
Normal Power Splitting	18-40GHz		12		dB	
Normal Phase Shift			0		Degree	
Amplitude Balance			+/- 0.5	0.6	dB	
Phase Balance			+/- 5	6	Degree	
Insertion Loss				3	4.8	dB
Input VSWR				1.5	1.7	
Output VSWR				1.5	1.7	
Isolation			15	18		dB
CW Peak				20		W
Peak Power				100		W
Weight				440		g
Dimension(L/W/H)			210x36x12.7			mm

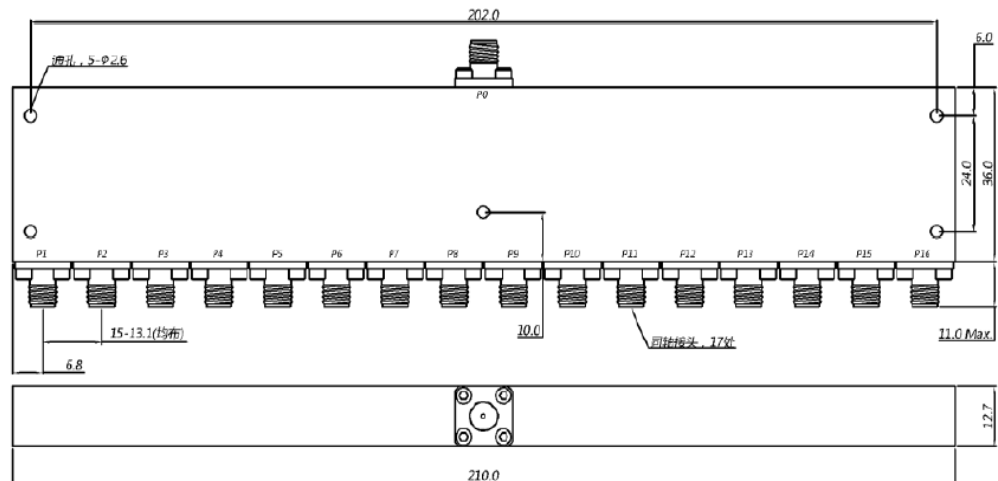
Order Information

Part Number	Description
AT-PD16-1840	16Ways 18-40GHz Power Divider With 2.92mm Female Connectors

Consult factory for other connectors option

Dimension

Unit: mm/Degree



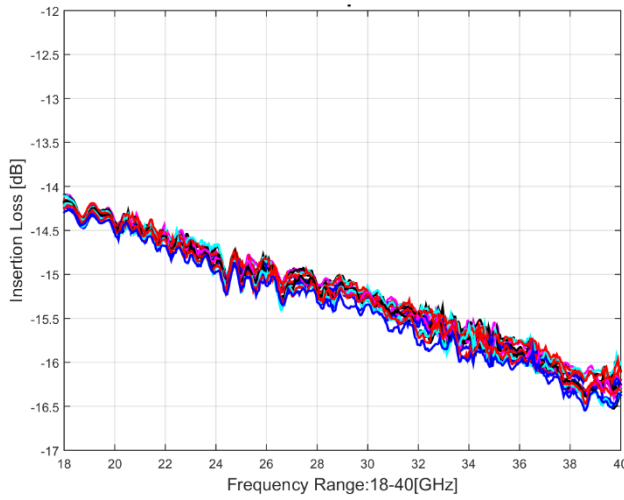
AT Microwave

RM1204,NO.2911,North Zhongshan RD, Putuo District , Shanghai ,China, 200063

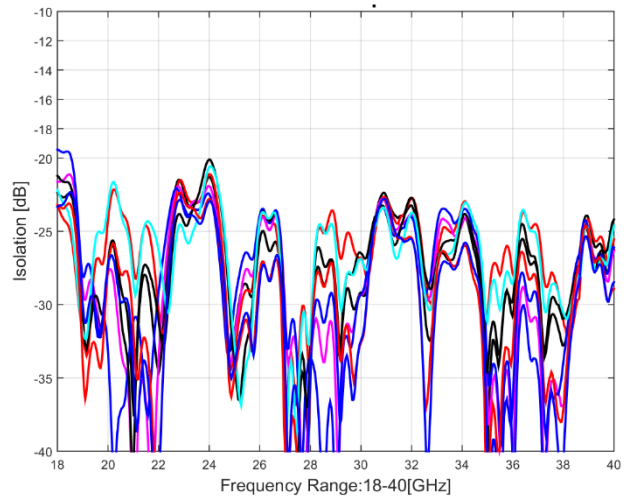
Tel:+8621-5291 8556 Email:sales@atmicrowave.com www.atmicrowave.com

16 Ways Wilkinson Power Divider/Combiner

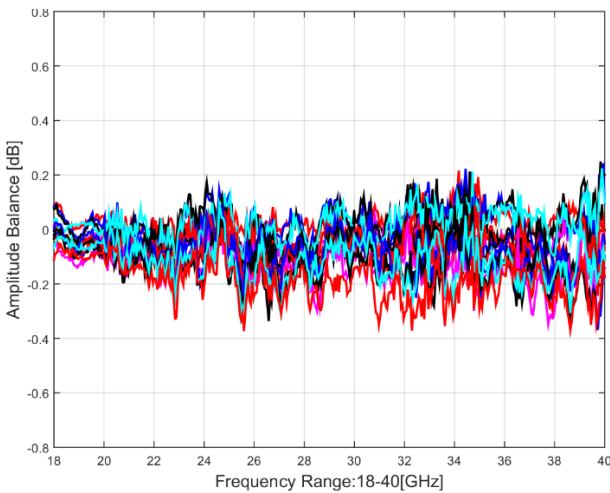
AT-PD16-1840



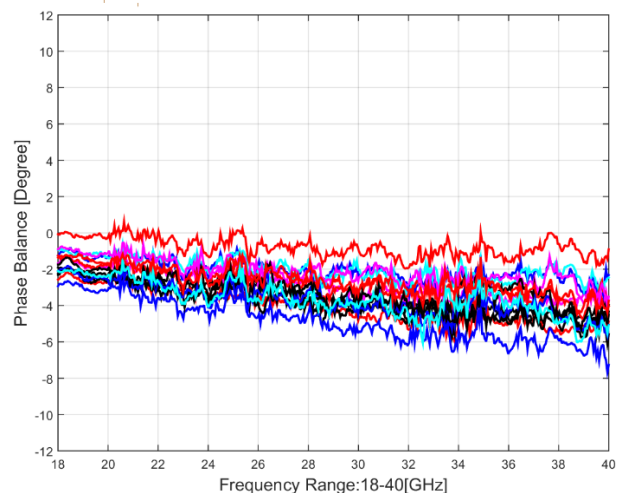
Output-Port Insertion Loss



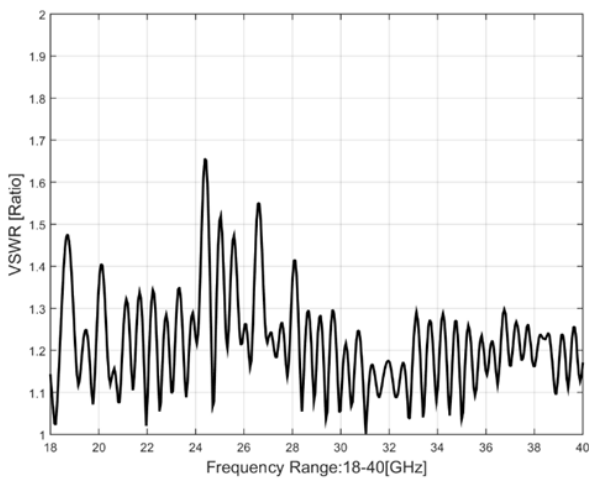
Output Port Isolation



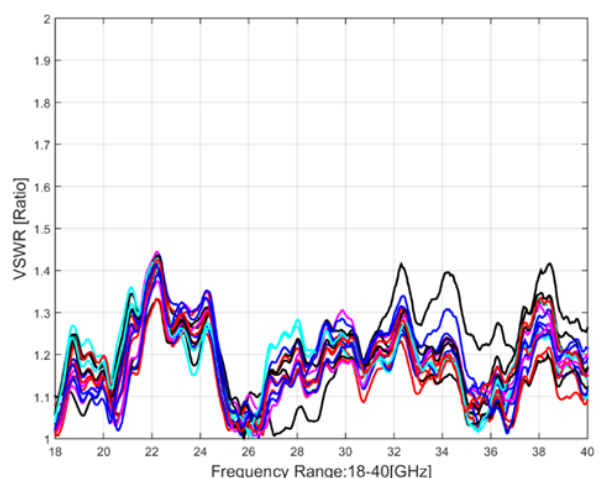
Output Port Amplitude Balance



Phase Balance



Input Port VSWR



Output-Port VSWR

AT Microwave

RM1204,NO.2911,North Zhongshan RD, Putuo District , Shanghai ,China, 200063

Tel:+8621-5291 8556 Email:sales@atmicrowave.com www.atmicrowave.com