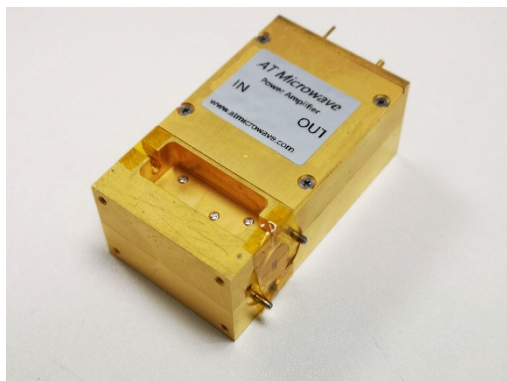


## W Band Broadband Power Amplifier



### Product Overview

AT-PA-85100-1620 is power amplifier with +20dBm output power in the frequency of 85-100GHz. The DC power requirement is +6V/800mA. The module is with a standard WR-10 waveguide.

The power amplifier has high gain, high linearity, low input/output return loss and flat gain response.

More information, please visit [www.atmicrowave.com](http://www.atmicrowave.com)

### Advantages

- ✓ Frequency: 85-100GHz
- ✓ Psat:+20dBm
- ✓ Small signal gain: 16dB
- ✓ Single Power Supply

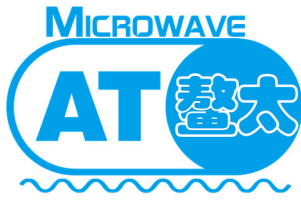
### Application

- ✓ W band Imaging
- ✓ FOD (Foreigner Objects Debris)
- ✓ Test Equipment
- ✓ ROF (RF Over Fiber)
- ✓ Radar System

### Key Features

Parameter	Min	Typical	Max
Frequency		85-100GHz	
Gain		16dB	
Drain Supply		+6V	+7V
Quiescent Current/A (NO RF)		0.76A	
Psat Current/A		1.1A	
P1db		+15dBm	
Psat	+18	+20dBm	
Input Return Loss		-8dB	
Output Return Loss		-10dB	
Spec Temp		25C	





# AT-PA-85100-1620

85-100GHz Power Amplifier, Psat=+20dBm

## Absolute Maximum Ratings Table

Parameter	Value
Drain Supply	+7V
RF Input Power	+18dBm
Operating Temperature	0 to +50C
Storage Temperature	-65 to +150C

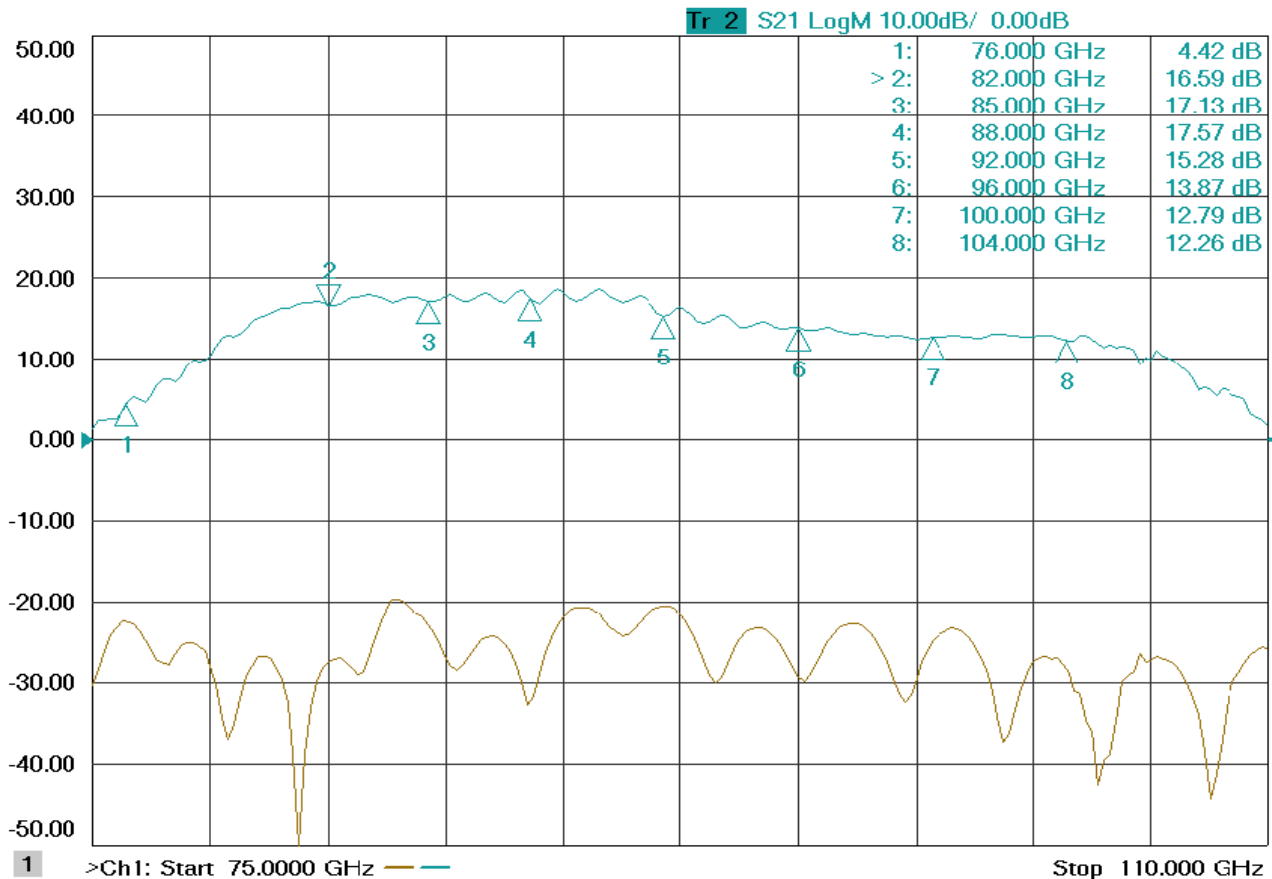
### Caution:

Please pay attention to the case temperature. If case temperature exceeds higher than +50C, heat sink and fan are required, or the amplifier may be damaged.

### Notes:

1. Datasheet may be changed according to update of MMIC, Raw materials , process, and so on.
2. This data is only for reference, not for guaranteed specifications.

Please contact AT Microwave team to make sure you have the most current data.



## Gain vs Frequency

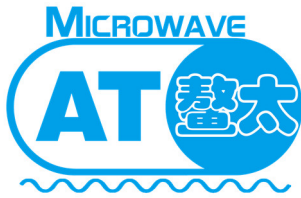
Shanghai AT Microwave Limited

Tel:021-6229 1233

Email:sales@atmicrowave.com

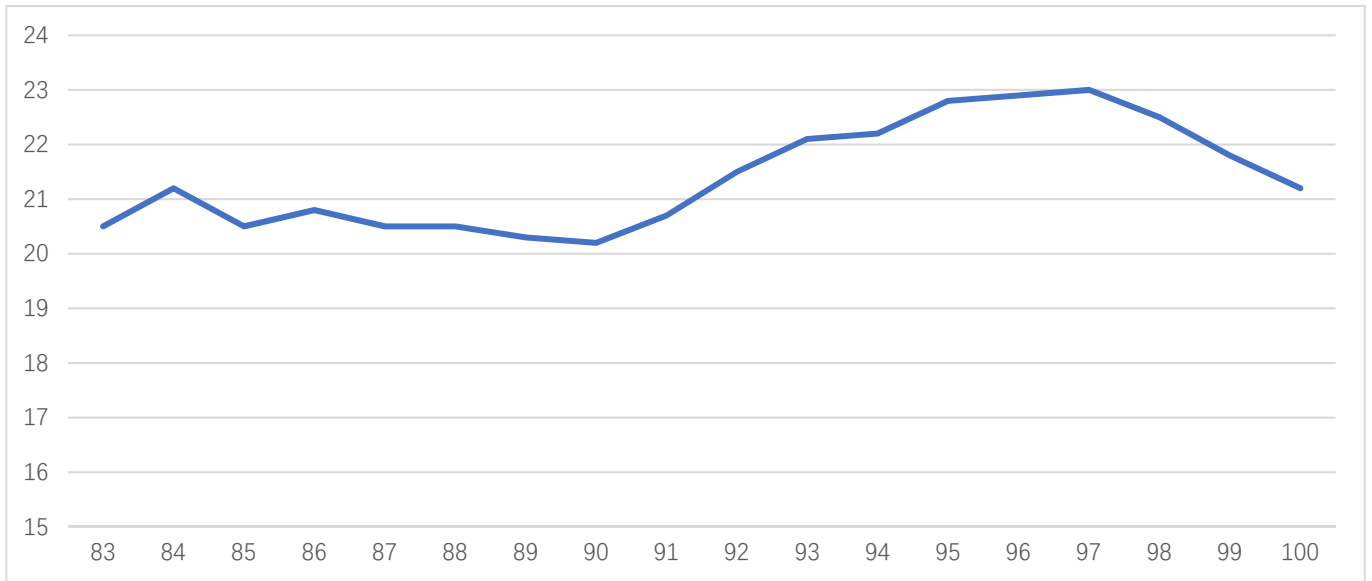
www.atmicrowave.com





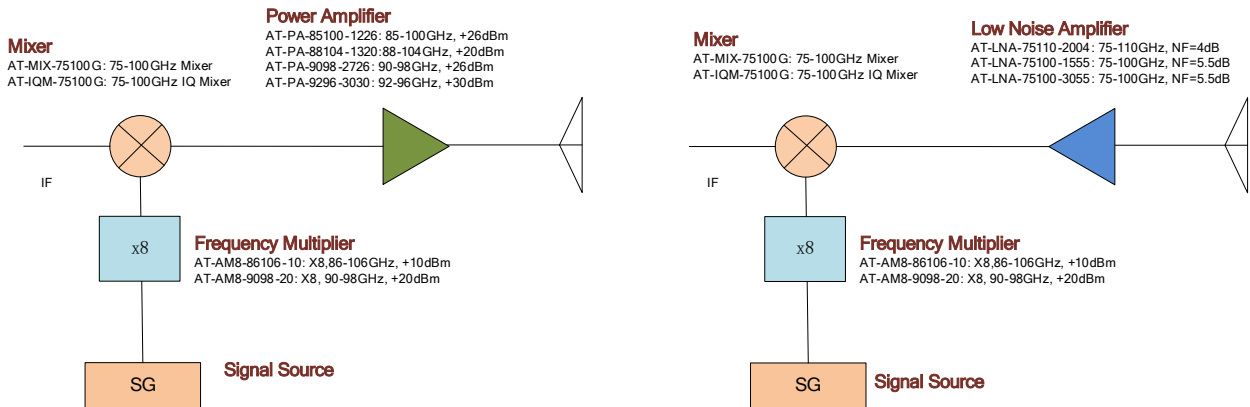
# AT-PA-85100-1620

85-100GHz Power Amplifier,  $P_{sat}=+20dBm$

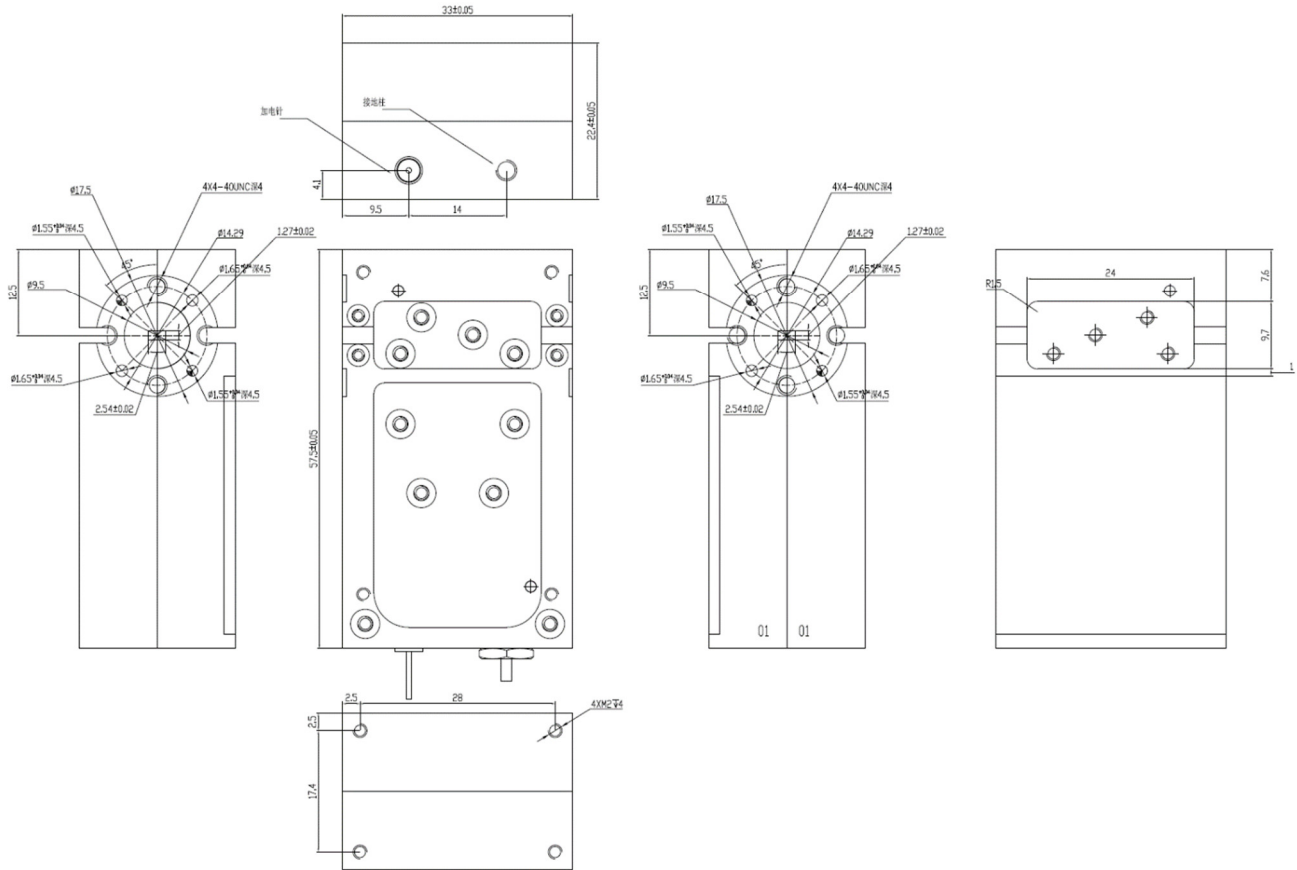


Psat vs Frequency at Pin=+15dBm

## W Band Solution:



### Dimension: (unit in mm)



### Mechanical Information

Parameter	Value
Case Material	Brass
Finishing	Gold Plated
Weight	221g
Dimension	57.5x33x22.4mm

