

27-31GHz Medium Power Amplifier



Product Overview

AT-PA-2731-5020X is high gain medium power amplifier with 50dB gain in the frequency of 27-31GHz. The DC power requirement is +8V/350mA. The module is with 2.92mm connector.

The power amplifier has high gain, high linearity, low input/output return loss and flat gain response.

More information, please visit www.atmicrowave.com

Advantages

- ✓ Frequency: 27-31GHz
- ✓ Small signal gain: 50dB
- ✓ Pout=+20dBm
- ✓ Single Power Supply

Application

- ✓ 5G Communication
- ✓ Test Equipment
- ✓ ROF (RF Over Fiber)
- ✓ Radar System

Key Features

Parameter	Min	Typical	Max
Frequency Center		27-31GHz	
Gain		50dB	
Input Power		-40dBm	-30dBm
Gain Flatness		+/-1	+/-2dB
P1Db	+20dBm	+21dBm	
Psat		+22dBm	
NF		5dB	
Drain Supply(Note)	+5.5V	+8V	+12V
Current		350 mA	
Input VSWR		1.5	2.5
Output VSWR		1.5	2.5
Spec Temp		25C	





AT-PA-2731-5020X

27-31GHz Medium Power Amplifier

Mechanical Information

Item	Description
Input Port	2.92mm Female
Output Port	2.92mm Female
Case Material	Copper
Finish	Nickel Plated
Weight (Without Heatsink)	150g
Size:	45x34x8.5 mm

Absolute Maximum Ratings Table

Parameter	Value
Drain Supply	+15V
RF Input Power	-10dBm
Operating Temperature	-20 to + 70C
Storage Temperature	-65 to +150C

Caution:

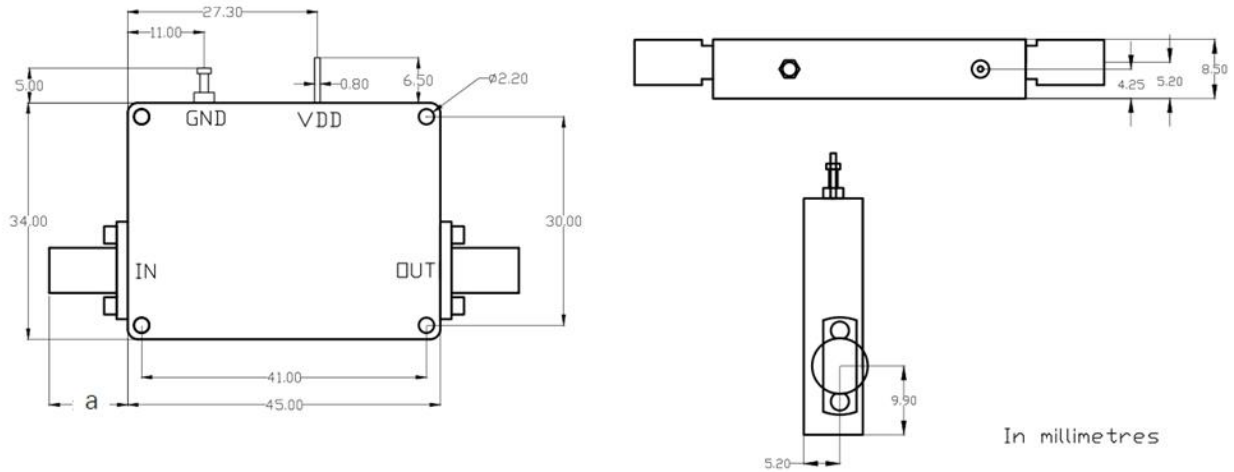
Please pay attention to the case temperature. If case temperature exceed higher than +50C, heat sink and fan are required, or the amplifier may be damaged.

Notes:

1. Datasheet may be changed according to update of MMIC, Raw materials , process, and so on.
2. This data is only for reference, not for guaranteed specifications.
3. Please contact AT Microwave team to make sure you have the most current data.



Dimension: (unit in mm)



	<26.5GHz	<40GHz	<50GHz	<67GHz
Connector	SMA	2.92mm	2.4mm	1.85mm
Lenth of a	9.4mm	9.5mm	10.8mm	11.3mm

Note: Female Default. Contact with us for other types.

Heat Sink Required During Operation if case Temp higher than 50C

