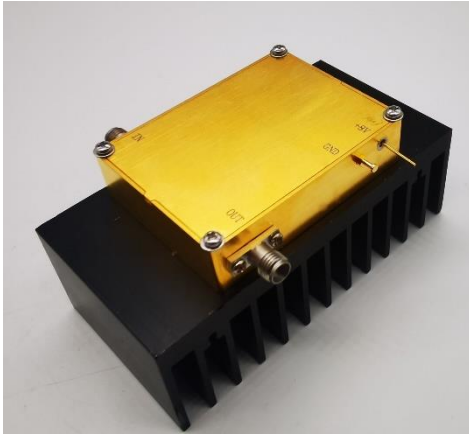


### 15-43GHz Broadband Amplifier, +28dBm

2021-9-30



#### Product Overview

AT-PA-1543-3028CT is high gain power amplifier with +28dBm output power in the frequency of 15-GHz. The DC power requirement is +12V/0.75A at Psat output. The module is with 2.92mm connector.

The power amplifier has high gain, high linearity, low input/output return loss and flat gain response.

More information, please visit [www.atmicrowave.com](http://www.atmicrowave.com)

#### Advantages

- ✓ Frequency: 15-43GHz
- ✓ Psat:+28dBm
- ✓ Small signal gain: 30dB
- ✓ Single Power Supply

#### Application

- ✓ 5G Communication
- ✓ Test Equipment
- ✓ ROF (RF Over Fiber)
- ✓ Radar System

#### Key Features

Parameter	Min	Typical	Max
Frequency		15-43GHz	
Gain	27dB	30dB	
P1dB		+27dBm	
Psat	+27	+28dBm	
Drain Supply	+8V	+12V	+15V
Current NO RF	0.85A	0.65A	0.45A
Idd Psat	1.1A	0.75A	0.6A
Input Return Loss	-5	-10 dB	
Output Return Loss	-5	-10 dB	
Spec Temp		25C	





# AT-PA-1543-3028CT

15-43GHz Power Amplifier

## Mechanical Information

Item	Description
Input Port	2.92mm Female
Output Port	2.92mm Female
Case Material	Copper
Finish	Gold Plated
Weight (Without Heatsink)	200g
Size:	60X45X14 mm

## Absolute Maximum Ratings Table

Parameter	Value
Drain Supply	+13V
RF Input Power	+15 dBm
Operating Temperature	-20 to +70C
Storage Temperature	-65 to +125C

### Caution:

Please pay attention to the case temperature. If case temperature exceed higher than +43C, heat sink and fan are required, or the amplifier may be damaged.

### Notes:

1. Datasheet may be changed according to update of MMIC, Raw materials , process, and so on.
2. This data is only for reference, not for guaranteed specifications.
3. Please contact AT Microwave team to make sure you have the most current data.

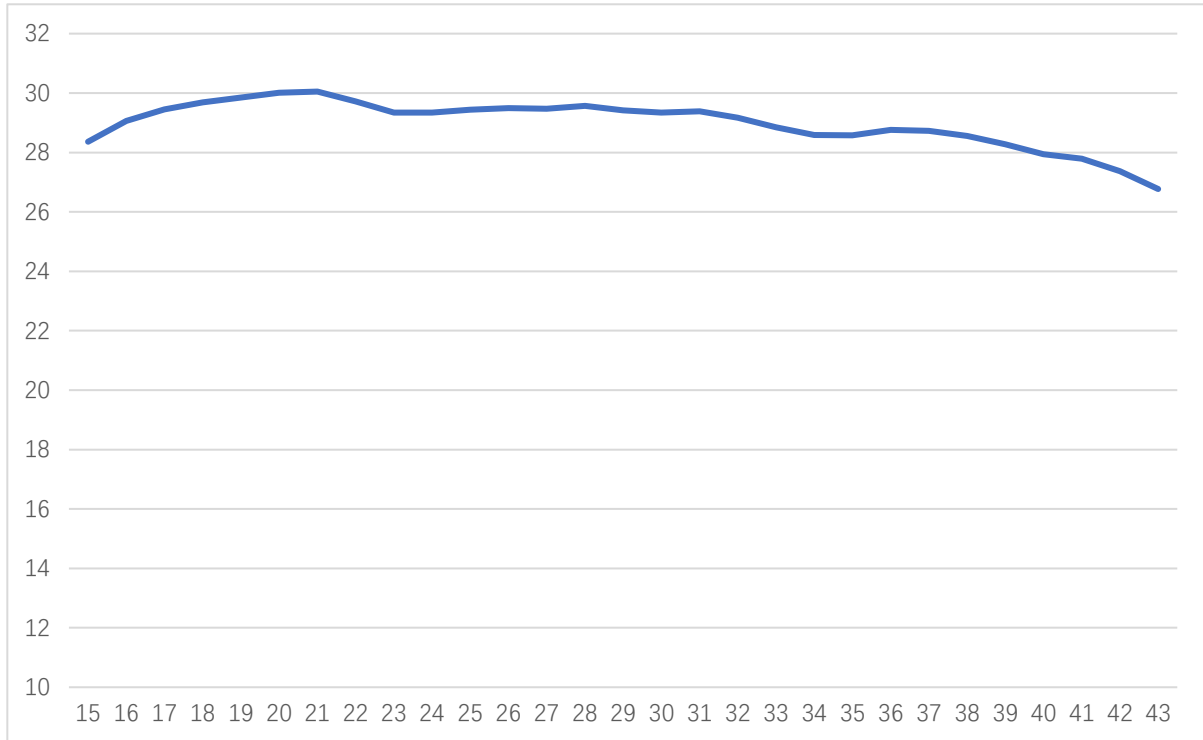




# AT-PA-1543-3028CT

15-43GHz Power Amplifier

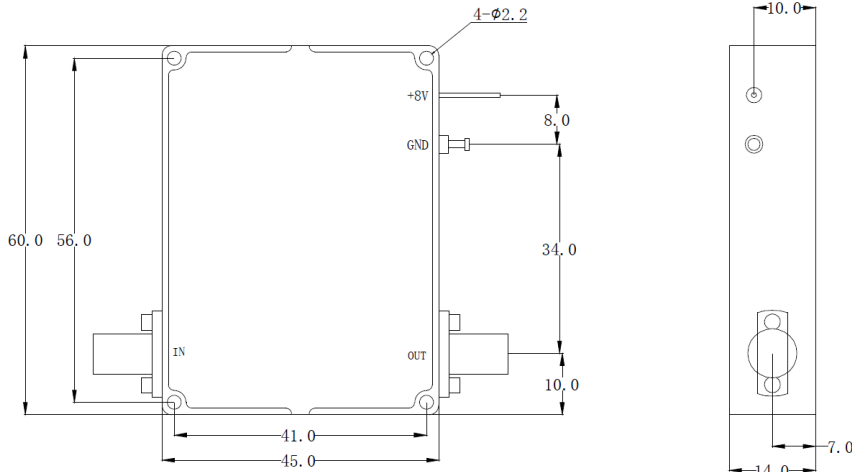
## Test Data:



Psat vs Frequency

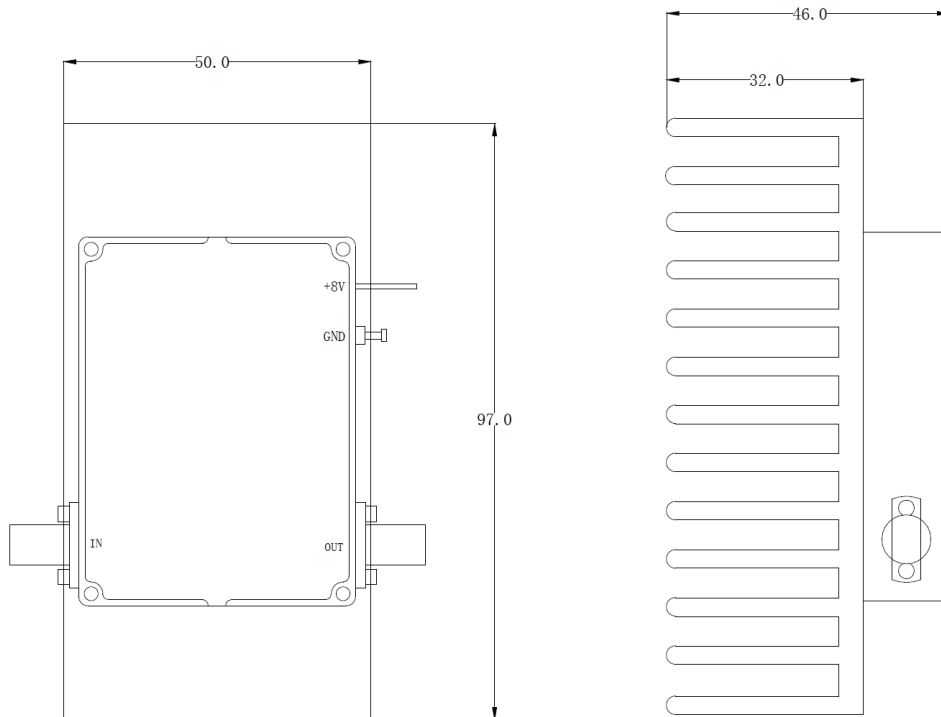


### Dimension: (unit in mm)



	<26.5GHz	<40GHz	<50GHz	<67GHz
Connector	SMA	2.92mm	2.4mm	1.85mm
Length of a	9.4mm	9.5mm	10.8mm	11.3mm

Note: Female Default. Contact with us for other types.



Including a small heatsink without Fan if output Power higher than +20dBm.

Customers can removed it or use their own heatsink according to actual situation.

**Heat Sink Required During Operation if case Temp higher than 50C**

