

AT-LPF-36HC

2022-11-1

DC-36GHz Low Pass Filter, 2.92mm



Product Overview

AT Microwave offers high performance coaxial filter from low frequency to 67GHz, including BPF-Band Pass Filter, LPF-Low Pass Filter and HPF-High Pass Filter.

These filters are based on MMIC technology with small size and fast delivery time. Both RF1 and RF2 can be used as Input or output port. Other connector is available according to request.

More information, please visit www.atmicrowave.com

Advantages

- ✓ Low Insertion Loss
- ✓ Good Return Loss
- ✓ High Stop Band Suppression
- ✓ Sharp Roll-Off

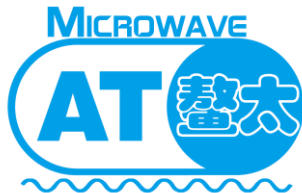
Application

- ✓ Automotive Radar Test
- ✓ FOD (Foreigner Objects Debris)
- ✓ Test Equipment
- ✓ ROF (RF Over Fiber)
- ✓ Radar System

Key Features

Parameter	Min	Typical	Max
Passband Frequency		DC-36GHz	
Passband Insertion Loss		-2.0 dB	-3.5dB
Passband Return Loss	-8dB	-15 dB	
Rejection@ 48-50GHz	-20	-25dB	
Spec Temp		25C	





AT-LPF-36HC

Coaxial Low Pass Filter

Mechanical Information

Item	Description
RF1 Port	2.92mm Female
RF2 Port	2.92mm Male
Case Material	Brass
Finish	Gold Plated
Weight	25g
Size:	See outline

Absolute Maximum Ratings Table

Parameter	Value
RF Power	+30dBm
Operating Temperature	-40 to +85C
Storage Temperature	-65 to +150C

Part Number Selection Guide

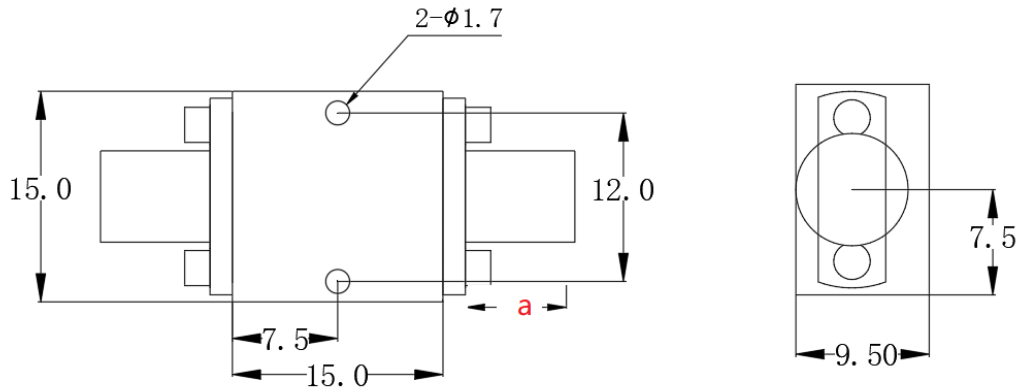
Item	Description
Part Number	In Default, Female to Male
Part Number-FF	RF1=Female, RF2=Female
Part Number-MM	RF1=Male, RF2=Male

Test Result

Performance may vary slight from unit to unit.
To be added.



Dimension (mm)



	<26.5GHz	<40GHz	<50GHz	<67GHz
Connector	SMA	2.92mm	2.4mm	1.85mm
Lenth of a	9.4mm	9.5mm	10.8mm	11.3mm

Note: Female Default. Contact with us for other types.

