

## 3dB Hybrid 180 Degree

## AT-H180-2640

### Feature

- 26.5-40GHz Broadband Performance
- Excellent amplitude and phase balance
- High Isolation
- Low VSWR



### Electrical Specifications -

Specifications guaranteed from -45 to +85°C, measured in a 50Ω system

Parameter	Frequency Range(GHz )	Min	Typ	Max	Unit	
Coupling	26.5-40GHz		3		dB	
Phase Shift			180		Degree	
Amplitude Balance			+/- 1		dB	
Phase Balance			+/- 10		Degree	
Insertion Loss				3		dB
VSWR				1.7		
Isolation				15		dB
CW/Peak Power				20/3000		W
Weight				80		g
Dimension( LxWxH)			40x40.6x12.7			mm

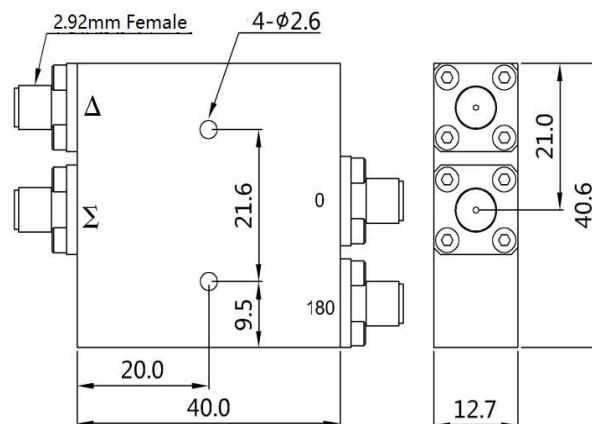
### Order Information

Part Number	Description
AT-H180-2640	26.5-40GHz 180Degree Hybrid With 2.92mm Female Connectors

Consult factory for other connectors option

### Dimension

Unit: mm/Degree



AT Microwave

RM1204,NO.2911,North Zhongshan RD, Putuo District , Shanghai ,China, 200063

Tel:+8621-6229 1233 Email:sales@atmicrowave.com www.atmicrowave.com

3dB Hybrid 180 Degree

AT-H180-2640

Typical Performance

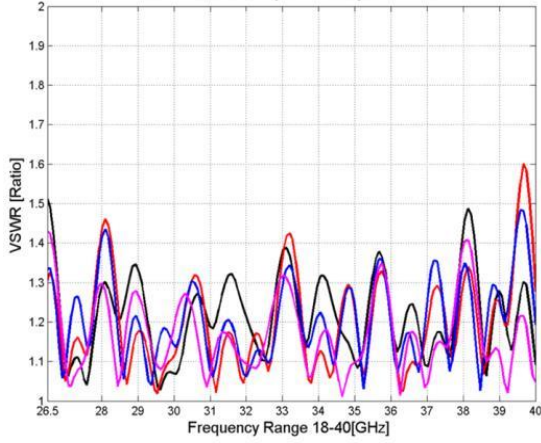


Figure 1: Input /Output VSWR

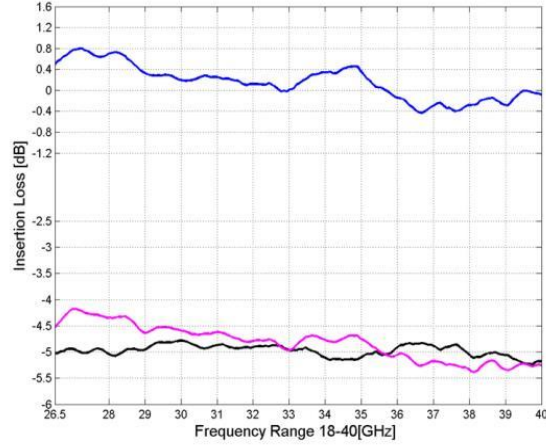


Figure 2: Delta IN IL & Amp Balance

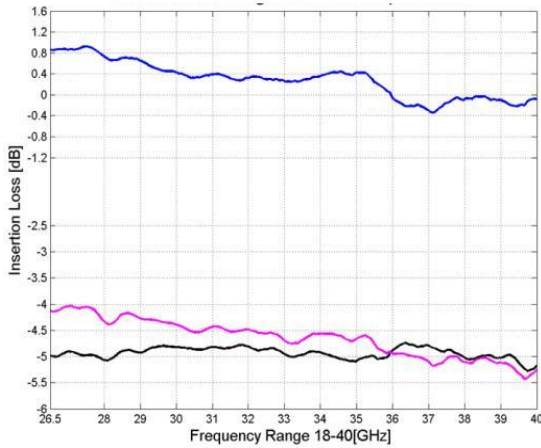


Figure 3: Sigma IN IL & Amp Balance

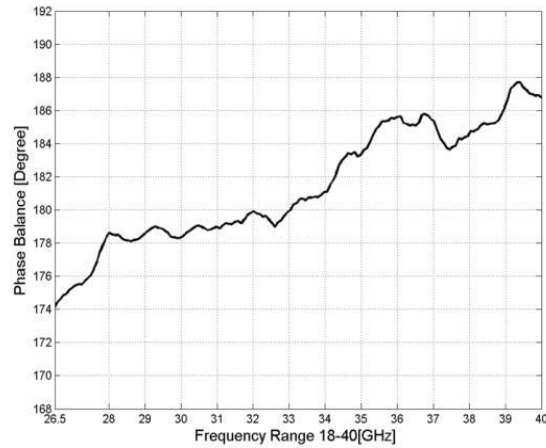


Figure 4: Delta IN Phase Balance

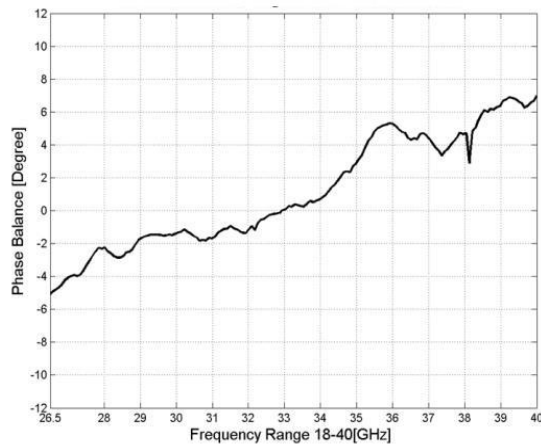


Figure 5: Sigma IN Phase Balance

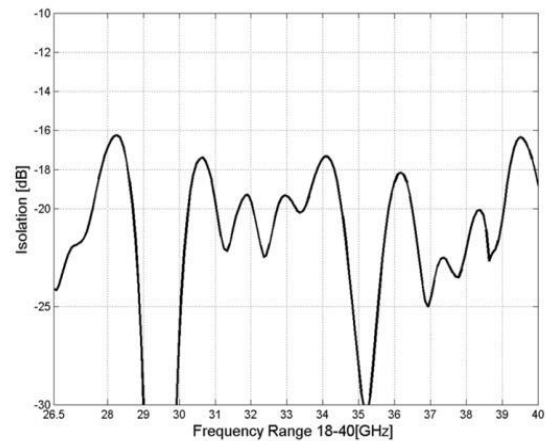


Figure 6: 0-180 Degree Isolation

AT Microwave reserves the right to make changes to the information contained herein without notice.

AT Microwave

RM1204,NO.2911,North Zhongshan RD, Putuo District , Shanghai ,China, 200063

Tel:+8621-6229 1233 Email:sales@atmicrowave.com www.atmicrowave.com