

### AT-BPF-0818HC

2022-3-21

### 8-18GHz Band Pass Filter, SMA



#### Product Overview

AT Microwave offers high performance coaxial filter from low frequency to 67GHz, including BPF-Band Pass Filter, LPF-Low Pass Filter and HPF-High Pass Filter.

These filters are based on MMIC technology with small size and fast delivery time. Both RF1 and RF2 can be used as Input or output port. Other connector is available according to request.

More information, please visit [www.atmicrowave.com](http://www.atmicrowave.com)

#### Advantages

- ✓ Low Insertion Loss
- ✓ Good Return Loss
- ✓ High Stop Band Suppression
- ✓ Sharp Roll-Off

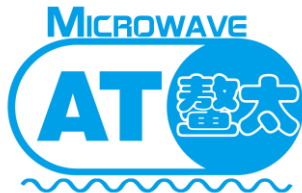
#### Application

- ✓ Automotive Radar Test
- ✓ FOD (Foreigner Objects Debris)
- ✓ Test Equipment
- ✓ ROF (RF Over Fiber)
- ✓ Radar System

#### Key Features

Parameter	Min	Typical	Max
Passband Frequency		8-18GHz	
Passband Insertion Loss		-3.5dB	-5.0dB
Passband Return Loss	-8dB	-15 dB	
Low Band Rejection@ 7GHz	20dB	30dB	
High Band Rejection@ 21GHz	20dB	30dB	
Spec Temp		25C	





# AT-BPF-0818HC

Coaxial BPF-Band Pass Filter

## Mechanical Information

Item	Description
RF1 Port	SMA Female
RF2 Port	SMA Male
Case Material	Brass
Finish	Gold Plated
Weight	25g
Size:	See outline

## Absolute Maximum Ratings Table

Parameter	Value
RF Power	+30dBm
Operating Temperature	-40 to +85C
Storage Temperature	-55 to +125C

## Notes:

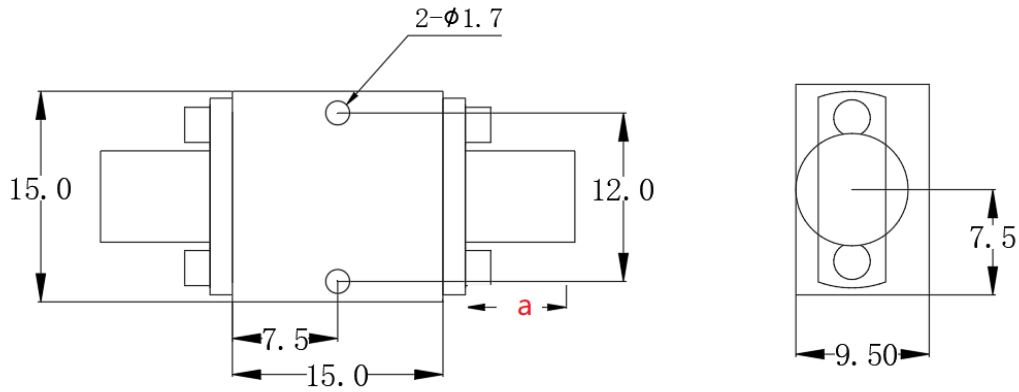
1. Datasheet may be changed according to update of MMIC, Raw materials , process, and so on.
  2. This data is only for reference, not for guaranteed specifications.
- Please contact AT Microwave team to make sure you have the most current data.

## Test Data (25C)

TO BE ADDED.



### Dimension ( mm)



	<26.5GHz	<40GHz	<50GHz	<67GHz
Connector	SMA	2.92mm	2.4mm	1.85mm
Lenth of a	9.4mm	9.5mm	10.8mm	11.3mm

Note: Female Default. Contact with us for other types.

