

### AT-BPF-0204HC

2022-3-21

### 2-4GHz Band Pass Filter, SMA



#### Product Overview

AT Microwave offers high performance coaxial filter from low frequency to 67GHz, including BPF-Band Pass Filter, LPF-Low Pass Filter and HPF-High Pass Filter.

These filters are based on MMIC technology with small size and fast delivery time.

More information, please visit [www.atmicrowave.com](http://www.atmicrowave.com)

#### Advantages

- ✓ Low Insertion Loss
- ✓ Good Return Loss
- ✓ High Stop Band Suppression
- ✓ Sharp Roll-Off

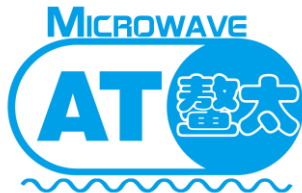
#### Application

- ✓ Automotive Radar Test
- ✓ FOD (Foreigner Objects Debris)
- ✓ Test Equipment
- ✓ ROF (RF Over Fiber)
- ✓ Radar System

#### Key Features

Parameter	Min	Typical	Max
Passband Frequency		2-4GHz	
Passband Insertion Loss		-3.5dB	-5.0dB
Passband Return Loss	-8dB	-15 dB	
Low Band Rejection@ 1.3GHz	30dB	40dB	
High Band Rejection@ 5.0GHz	30dB	40dB	
Spec Temp		25C	





# AT-BPF-0204HC

Coaxial BPF-Band Pass Filter

## Mechanical Information

Item	Description
RF1 Port	SMA Female
RF2 Port	SMA Male
Case Material	Brass
Finish	Gold Plated
Weight	25g
Size:	See outline

## Absolute Maximum Ratings Table

Parameter	Value
RF Power	+30dBm
Operating Temperature	-40 to +85C
Storage Temperature	-65 to +150C

## Part Number Selection Guide

Item	Description
Part Number	In Default, Female to Male
Part Number-FF	RF1=Female, RF2=Female
Part Number-MM	RF1=Male, RF2=Male

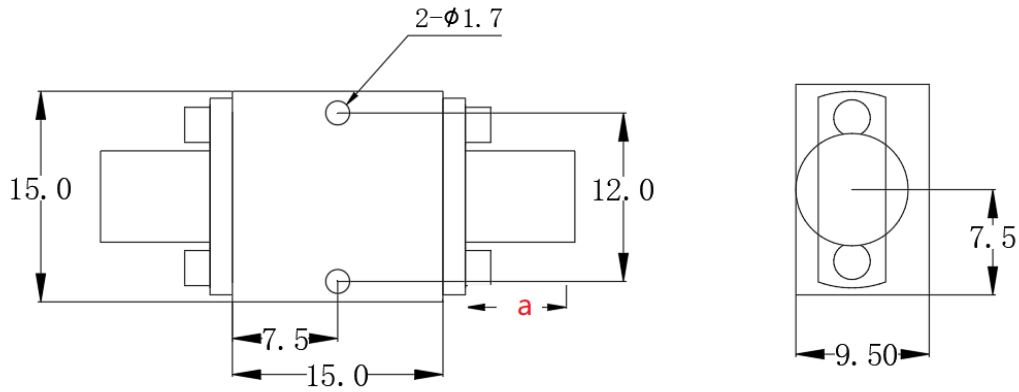
## Test Result

Performance may vary slight from unit to unit.

To be added.



### Dimension ( mm)



	<26.5GHz	<40GHz	<50GHz	<67GHz
Connector	SMA	2.92mm	2.4mm	1.85mm
Lenth of a	9.4mm	9.5mm	10.8mm	11.3mm

Note: Female Default. Contact with us for other types.

