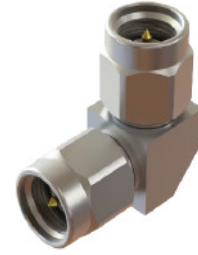


Right-Angle Adapter

AT-AP-24X24X-RA

Feature

- 2.4mm TO 2.4mm Adapter
- Specified DC-50GHz
- Low Insertion Loss
- Excellent Broadband VSWR



Specifications -

Specifications guaranteed from -45 to +85°C, measured in a 50Ω system

Parameter	Frequency Range(GHz)	Min	Typ	Max	Unit
Insertion Loss	DC-50GHz		1	1	dB
VSWR	DC-50GHz		1.3	1.4	

Environmental

- 55 C to +125 C
- Corrosion: MIL-STD 202
- Vibration: MIL-STD 202

Materials

- Body: SU304 Polished & Passivated
- Center Contact: Beryllium Copper Gold Plated
- Insulators: PEI

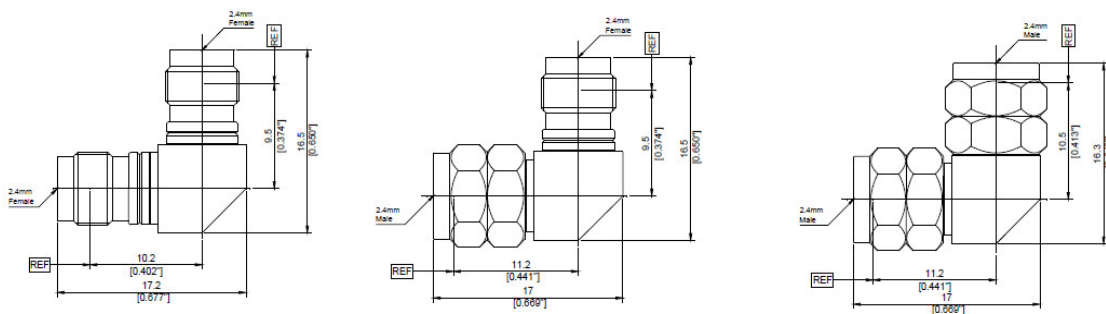
Mechanical

- 1000 Cycle Min

Order Information

Connector #1	Connector #2	Part Number
2.4mm Female	2.4mm Female	AT-AP-24F24F-RA
2.4mm Female	2.4mm Male	AT-AP-24F24M-RA
2.4mm Male	2.4mm Male	AT-AP-24M24M-RA

Dimension



AT Microwave

RM1204,NO.2911,North Zhongshan RD, Putuo District , Shanghai ,China, 200063

Tel:+8621-5291 8556 Email:sales@atmicrowave.com www.atmicrowave.com