



AT-AM4-8595-15

X4 Active Multiplier, Pout=+15dBm

High Power x4 Active Multiplier, +15dBm

2021-5-30



Product Overview

AT-AM4-8595-15 is a W band FMCW transmitter subsystem. The input is 21.25-23.75GHz, with x4 multiplier, and the output frequency is 85-95GHz. With a high power amplifier inside, the output power is more than +15dBm.

The input port is SMA female, and the output is a WR-10 waveguide. Other port configurations are available under different requirement.

More information, please visit www.atmicrowave.com

Feature

- ✓ Frequency: 85-95GHz
- ✓ Pout +15dBm Typ
- ✓ Input: 21.25-23.75GHz,
- ✓ Input Power:+10dBm
- ✓ Single Power Supply

Application

- ✓ W band Imaging
- ✓ FOD (Foreigner Objects Debris)
- ✓ Test Equipment
- ✓ ROF (RF Over Fiber)
- ✓ Radar System

Key Features

Parameter	Min	Typical	Max
Input Frequency	21.25GHz		23.75GHz
Multiplier Factor		X4	
Input Power		+10dBm	
Output Frequency	85GHz		95GHz
Output Power		+15dBm	
Harmonic Suppression		-20dBc	
Drain Voltage		+5V	+8V
Current		0.9A	1.1A
Specification Temp		25C	





AT-AM4-8595-15

X4 Active Multiplier, Pout=+15dBm

Mechanical Information

Item	Description
Input Port	2.92mm Female
Output Port	WR-10
Case Material	Copper
Finish	Gold Plated
Weight (Without Heatsink)	190g
Size:	60x25x20 mm

Absolute Maximum Ratings Table

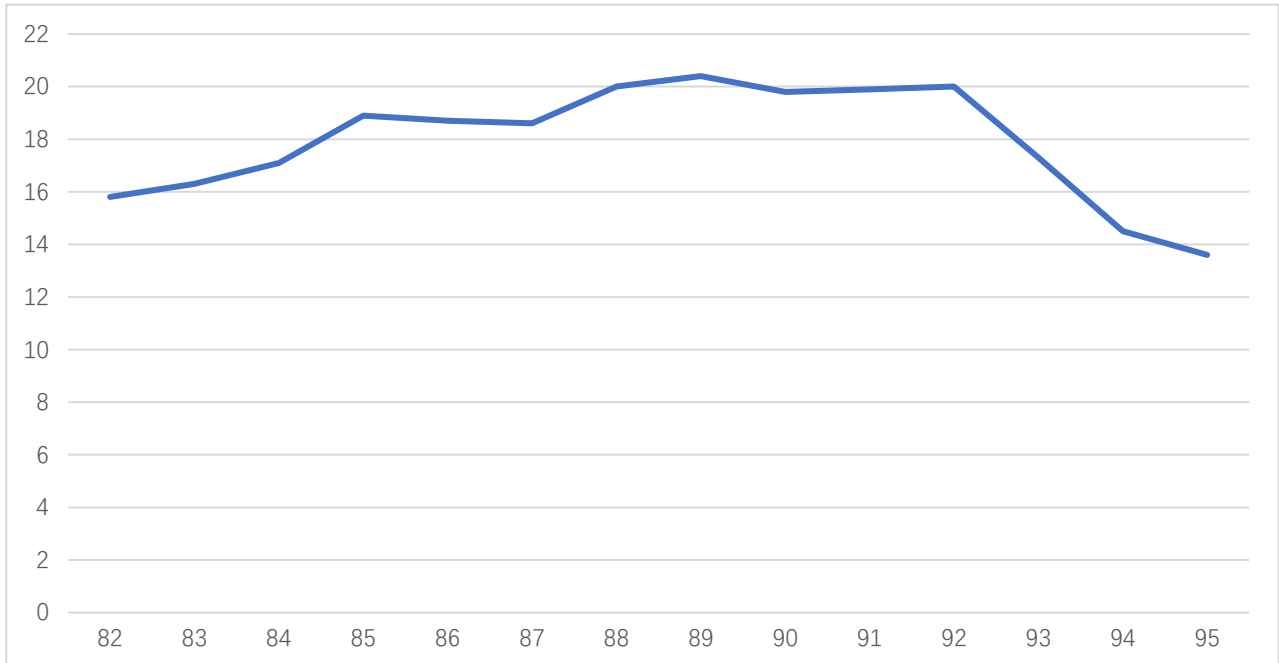
Parameter	Value
Drain Supply	+10V
RF Input Power	+15dBm
Operating Temperature	0 to +50C
Storage Temperature	-65 to +150C

Notes:

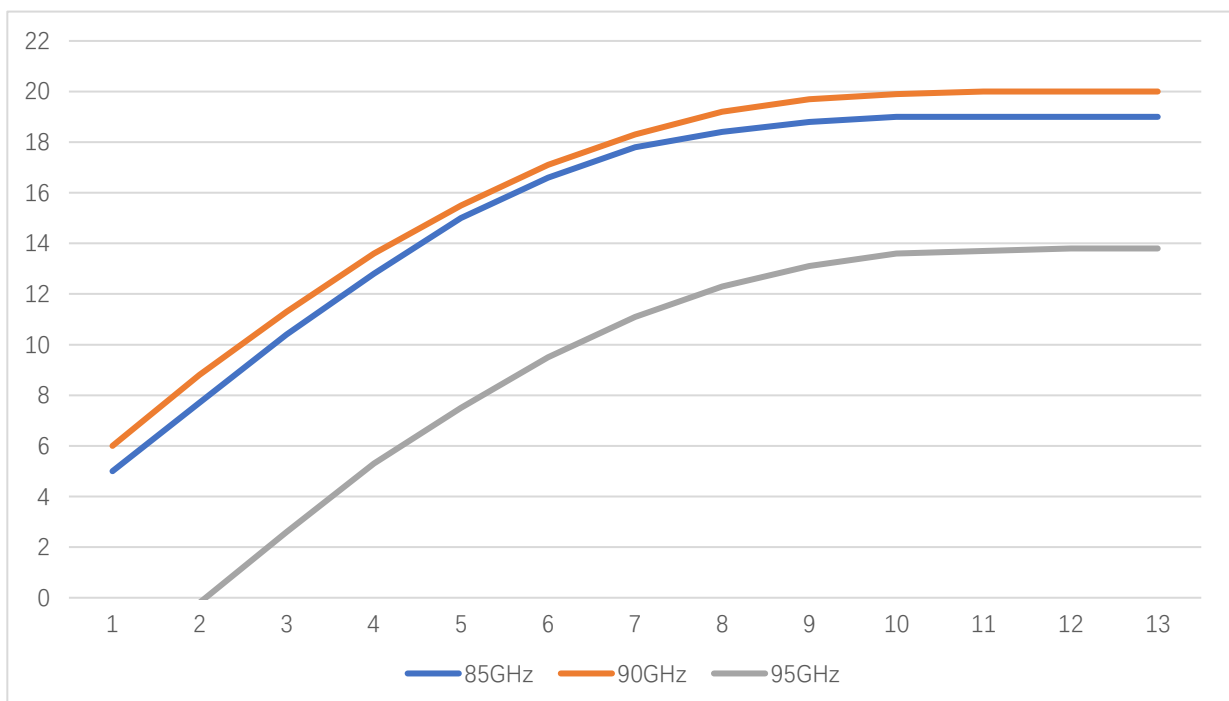
1. Datasheet may be changed according to update of MMIC, Raw materials , process, and so on.
2. This data is only for reference, not for guaranteed specifications.
3. Please contact AT Microwave team to make sure you have the most current data.



Test Data:

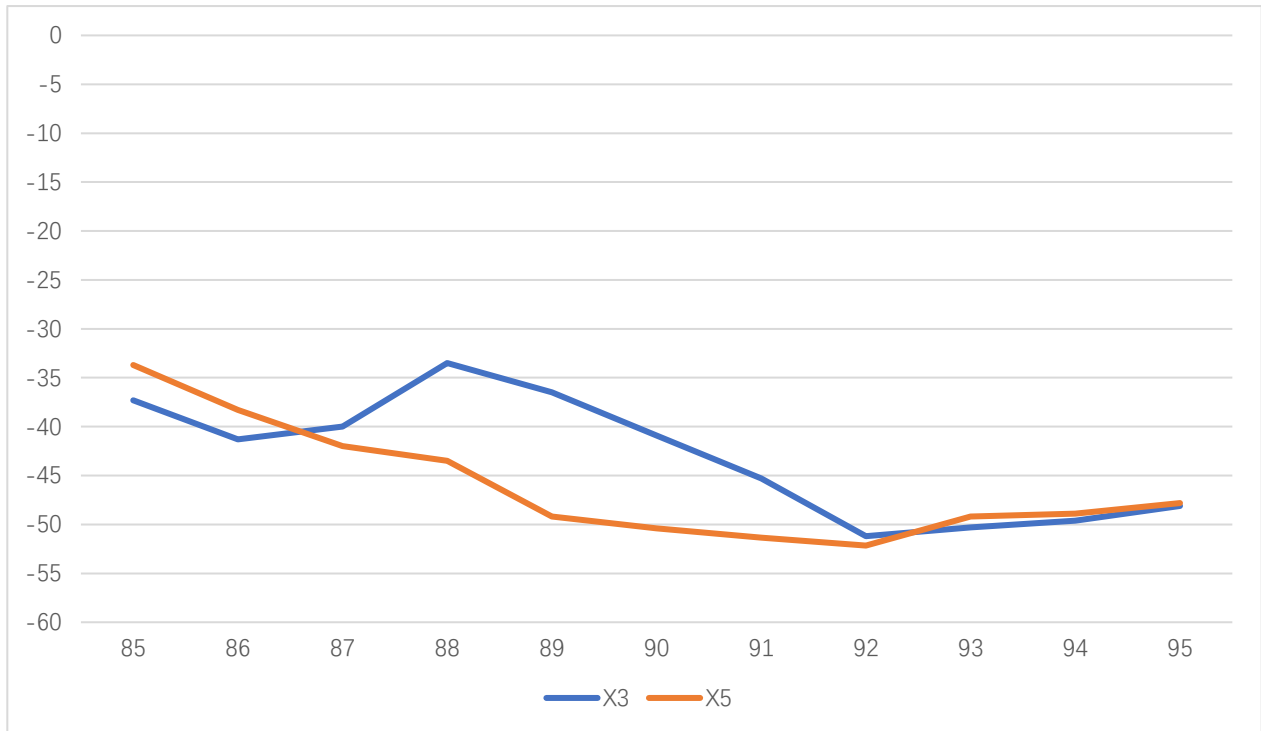


Pout vs Frequency



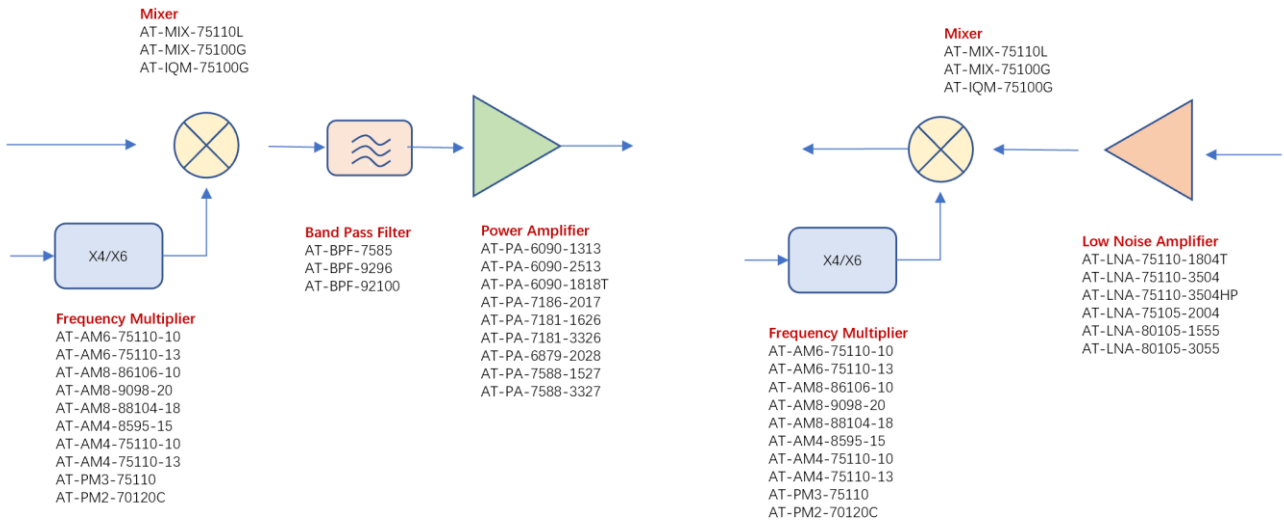
Pout vs Pin at 85/90/95GHz





X3/X5 Harmonics vs X4 Pout

W Band Solution:



Dimension(unit mm)

